

29th Annual AHCA National Sale

Saturday, January 21, 2017 • 10AM MST

National Western Stock Show
Beef Palace Auction Arena



Deer's Feet

**GENES THAT FIT
HIGHLAND BLOWOUT!**



Registered Highland Seedstock, Semen & Embryos Sell!

As plans unfold and construction begins on the new National Western Center, we are reminded of what a truly remarkable venue this is for our 29th Annual National Show & Sale. And it is only getting better! The new National Western Center, a year-round experiential education, research, commerce and entertainment campus will be the permanent home for the NWSS. Historic neighborhoods will be reconnected. New parks and open space created. The South Platte River restored. Over the next decade, this century-old part of Denver will become a modern home for agriculture innovation and global agribusiness. Highlands will be at the heart of the excitement!

We are pleased this is the home of our National Sale and a dynamic stage to publicize this superior line up. It is a remarkable opportunity to purchase cattle that are exclusively chosen by our consignors. Robust pedigrees from east to west coast are represented. These cattle represent proven performance, style and superiority. In addition, you will see 2017 National Show Champions enter the auction ring for your buying pleasure. An exciting mix of unique bloodlines are represented with live cattle and semen/embryos that have never before been offered.

Young breeders, the AHCAj Futurity is now in its fifth year. Any AHCA junior who purchases a breeding heifer at this year's National Sale will have the opportunity to be rewarded up to \$1000 next year. The heifer needs to be exhibited by the junior at the 2018 National Show in Denver and meet other guidelines. Contact AHCA or check out the details at highlandcattleusa.org on the juniors tab.

For further information on any of these fine lots, please contact the sale consigners or sale committee. We are delighted to continue to have Sheridan Auction Company at the gavel. They have a rock solid reputation for excellence and commitment to the Highland business. If you are unable to attend the sale but wish to bid, contact Bill or Doug Sheridan (517) 676-9800 or (517) 749-7976. There is a 4% convenience fee for all credit card transactions. You can watch the sale and bid via LiveAuctions.tv. If you have trucking needs, there are several options available. Please contact AHCA (303) 659-2399 or info@highlandcattleusa.org. Buyers are responsible for arrangements and they should be made prior to the sale. Following purchase of cattle, please remember it is the buyer's responsibility to care for them. If you are not present, please make the appropriate arrangements with the seller immediately after the sale.

On behalf of AHCA and the sale consignors, we encourage you to take advantage of cream of the crop genetics, cattle that have been handled extensively and the ease of purchasing at our National Sale. We extend a heartfelt thank you to our consignors for making this event possible and all those who so kindly devote their time to make the National Sale a success.

National Sale Committee
Heather Bailey, East Troy, WI
(262) 689-7013
tamarlinnorth@aol.com

Sheridan Auction Company
Bill & Doug Sheridan
Mason, MI
(517) 676-9800 or (517) 749-7976



Collin Demuth, York, NE
(402) 366-8238
collindemuth@hotmail.com

The National Sale will be Broadcast with Live Bidding at

LiveAuctions.TV

To participate:

1. Go to www.LiveAuctions.tv and click AHCA National Sale.
2. If you don't have an account, select create a new user and follow the instructions.
3. Log into the sale with your user account and request a buyer number. You will be prompted to provide your bank information.
4. Due to the increasing number of online bidders and buyer number requests, it is recommended to register and sign up prior to sale day to guarantee that your online seat is saved and your buyer number processed.

LiveAuctions.tv's viewing experience can vary depending on your internet connection at your bidding computer. DSL or cable internet connections are preferred. A wireless internet connection will work, however, a wireless connection can be affected by weather and other elements just like your cell phone reception.



Sire of Lot 1

1

STR Brooklyn (t)

Yellow Cow calved 5/17/16 Reg. No. 55,867

Tattoo: L: S11E

Star Lake Cattle Company – Daniel Thorne, Georges Mills, NH

STR Ruthless Game (AI,D)

Rushmore Bracken
Samhach Buidhe of Bairnsley (AI)
Isobaile of Cruachan
GH Due Diligence (D)

Star Lake Victoria
Star Lake Maggie

Star Lake Acadia

EZ Acres Gifford (ET)
Trafalgar Sampson II (D)
Trafalgar Fanny
Twinflower MacDonald (AI)
Star Lake Amber
Star Lake Blackberry

This stylish May heifer calf is one of our favorite picks from the 2016 calf crop. Her dam was a competitive show heifer and has gone on to be a productive brood cow. Brooklyn's sire has tremendous outcross lineage and was Grand Champion Bull at the 2016 NEHCA Spring Show and KILE. She is very docile, built to last and sure to catch the eye of any discerning cattle judge. This is your chance to take advantage of the STR Buyer's Incentive Program! For more details on this great lot please visit us at starlake.com.



2

Trafalgar Erica

Red Cow calved 5/2/16 Reg. No. 55,787

Tattoo: L: T42E

Trafalgar Square Farm – Ted Robbins, North Pomfret, VT

CBS Yaz's Yukon Jack (D)

Sunset Rebel Yell (D)
HSC Rebel's Jack (D)
LEA Crackerjack (D)
Ledyard's Talisker (D)
Cobblestones Yazmine
LEA Yarrow

Trafalgar Xena

EZ Acres Gifford (ET)
Trafalgar Sampson II (D)
Trafalgar Fanny
Trafalgar Luther (D)
EZ Acres Pauline (D)
EZ Acres Mircle

Erica is one of the top heifers in the 2016 calf crop at Trafalgar Square Farm. This stylish little lady is deep ribbed, long bodied and gets on the move with exceptional feet and legs. She is sired by the 2015 National Champion Bull CBS Yaz's Yukon Jack and her dam Trafalgar Xena was the 2014 ROE Cow/Calf of the Year. With many championships under her belt, this top prospect is ready for the show ring or the pasture.



3

SFF Alena's Kenzie

Black Cow calved 4/24/16 Reg. No. 55,832

Tattoo: L: C16E

Spring Flight Farm LLC – John & Jacquelyn Chotkowski, Elmira, NY

Flatheads Lal (D)

Gilchrist's Kodiak
Black Watch Dempsey (ET,D)
Four's Emma (D)
SNS Duke's Shadow (D)
Flying Highland's Molly
Lady Rebecca of Cawdor

Trafalgar Alena (D)

Trafalgar Sampson II (D)
Trafalgar Xander (D)
EZ Acres Norma Jean
Trafalgar Luther (D)
EZ Acres Pauline (D)
EZ Acres Mircle

SFF Alena's Kenzie is the first female out of Trafalgar Alena, the 2013 Show Heifer of the Year. She is an exciting prospect sired by Flatheads Lal, a successful show bull and prolific sire. At 183 days, Kenzie's weaning weight on grass and mama's milk was an impressive 439 lbs. This black beauty is structurally correct, thick and a calm presence that makes her a joy to work with. She will delight Highland enthusiasts of any age. SFF is the new farm prefix of Spring Flight Farm LLC, where you can rely on quality and longevity.



4

LEA Mallory

Red Cow calved 4/2/16 Reg. No. 55,530
Tattoos: R: LEA07E L: LEA07E
LEA-White Farms – Larry Alber & Pat White, Charlotte, MI

Sunset Rebel Yell (D)

Jock of Glengorm
Sunset Limited Edition (AI,D)
Sunset Eb's Harmony
Gusgurlach of Windrush (D)
Northridge Fargo
Leyna of Hi-Arrow

LEA Fairly

DH Montgomery (AI,D)
LEA Becket (D)
LEA In Vogue
LEA Raleigh (D)
LEA Birdie McDonald
QM Barbie

This top quality beauty has plenty of pedigree and breed character to pass around. Mallory is full sister to the Senior Reserve Heifer at the 2016 NWSS. She shares her sire, Sunset Rebel Yell, with both the Grand Champion Cow and Grand Champion Bull at this same venue. With the upcoming addition of 2 more daughters to the Impact Dam list, Rebel will be awarded Impact Sire status in 2017. Mallory's mother is already an Impact Dam boasting 5 generations of LEA-White breeding. Mallory should prove to be a top brood cow or tough competitor in the show ring.



5

Almosta Farm's Bellamy

Red Cow calved 3/4/16 Reg. No. 55,556
Tattoo: L: AL2E
Almosta Farm – Steve & Sue Dyke, Magnet, NE

Skye High Koal (D)

Jock of Glengorm
Sunset Limited Edition (AI,D)
Sunset Eb's Harmony
GOF Euripides 8E
Du Boise Panthere
Du Boise Flocon

Almosta Farm's Bailey (D)

DH White Gold
DH Montgomery (AI,D)
Drover Hill's Lear-Ghaoth
Weatherhill Donald Ruadh (D)
LEA Bancroft (D)
LEA Poe

Are you looking for a female that is the whole package? Bellamy is your girl! She is structurally correct, well-muscled, has a terrific disposition along with a unique color. With her dam Almosta Farm's Bailey consistently producing outstanding offspring and her sire Skye High Koal, the 2010 National Grand Champion Bull and 2009 Bull of the Year putting his stamp on his calves, she has gotten the best of both sides. Bellamy will do it all for you, whether it's adding new genetics into your program or getting a junior started with this great breed.



6

Skye High EZ Lily Bell

Red Cow calved 3/4/16 Reg. No. 55,790
Tattoo: L: BOV5E
Skye High Farms – Skyler Anderson, Coldwater, MI

Skye High Cornerstone (D)

LEA Forbes (D)
LEA Haaken (D)
LEA Valkyrie
CH Aloysius (D)
Skye High Vermillion (D)
Gilchrist's Angela (D)

Skye High Xylene

Black Watch Emo
SPH Uberdude (D)
SPH Sassy
Jock of Mapleview (AI,D)
Lilian of Five Star Farm (AI)
Dixie Belle of Kindwood

Proudly offered by Skye High Farms, Skye High EZ Lily Bell boasts a jaw dropping 205 day WW of 534 lbs. on milk and pasture alone, putting her in the top 15% for breed weaning weights (bull calves included). Super sound made with loads of width and dimension to spare, an outstanding performance record and pedigree, and an extremely quiet and sweet disposition to boot; have all made for an extremely tough heifer to part with and one we're confident will meet and exceed the expectations of Highland producers of any sector. More information available at skyehighfarms.com.



7

LEA Leigh

White Cow calved 9/5/15 Reg. No. 55,118
 Tattoos: R: LEA36D L: LEA36D
 LEA-White Farms – Larry Alber & Pat White, Charlotte, MI

LEA Heremon (D)

GCR Pompey (D)
 Flatheads Glen Moray (D)
 Pimushe Tabitha
 Owl Rock Xyris (D)

LEA Gwynyth

LEA Corrie
 LEA Kittery
 Sunset Limited Edition (AI,D)
 Sunset Rebel Yell (D)
 Northridge Fargo
 LEA Raleigh (D)
 LEA Vixen
 LEA Queen Regent

This fall born, powerful white heifer comes from a long line of performance cattle. She boasts no less than 4 Elite Impact Dams in her pedigree and comes from a history of heavy-milking, high performance females. The sires are no less impressive, 2 Impact Sires (soon to become 3) in the first 3 generations and an additional Impact Sire in one generation back. Leigh's sire imparts his offspring with a slightly larger frame, deep body and excellent growth on a strictly grass ration. We expect Leigh to mature into an extraordinary brood cow.



8

CBS Rosanna

Red Cow calved 4/19/15 Reg. No. 54,777
 Tattoo: L: CO11D
 Cobblestone Farm – Gordon & Carole Segal, East Troy, WI

Sorcha's Santiago 1X (D)

Sunset James (D)
 Ledyard's Talisker (D)
 Shat-Acres Darlene 2nd
 Cobblestones Gordon Ian (AI)

KJH Roxann

Sorcha's Sonasag
 RAM Sorcha
 DH White Gold
 Highland Spice Saffron (D)
 Goodwill Zila
 MacDonald of Esk
 Trafalgar Watchful
 Trafalgar Sieglinda

Rosanna comes to you from one of the most proven cows at Cobblestone Farm. Her dam has been a favorite on our farm. A producer of repeated soundness, structural correctness, deep-bodied, beautiful cattle. This will be the last daughter offered for sale from this tremendous producing dam. Rosanna's sire comes from a long lineage of steadfast breeders whose influence have left a strong impact within the Highland business. Check out her pedigree and don't miss the opportunity to purchase an exceptionally sound minded heifer with a ton of influence to produce superior stock. BW-82 lbs. WW-542 lbs.



9

Flatheads Laochag (D)

Black Cow calved 4/3/15 Reg. No. 55,692
 Tattoo: L: OD05
 Flathead Farms – Mike Mower, Kalispell, MT

Black Watch Dempsey (ET,D)

Gilchrist's Archibald
 Gilchrist's Kodiak
 Gilchrist's Shirley
 Gilchrist's Jock (D)
 Four's Emma (D)
 Peigi's Four of Willmorrie (D)

Flying Highland's Molly

Duke of Skye (ET,D)
 SNS Duke's Shadow (D)
 JE SNS Lost Mountain Indigo
 Triangle C Dawn Buster
 Lady Rebecca of Cawdor
 Paulson's Lady Di of Yoder

Exceptional black heifer, moderate frame, straight and thick! Balanced, mild disposition and halter broken in 3 sessions. Breeding is as good as it gets. Sire Black Watch Dempsey from Gilchrist's Kodiak and Four's Emma is a powerful combo. Dam Molly traces back to the Duke of Skye line. Very good feet and structure. Raised on grass in high mountain pastures. Should be an exceptional brood cow.



10 LEA Kassidy

Yellow Cow calved 6/4/14 Reg. No. 53,750
 Tattoos: R: LEA28C L: LEA28C
 LEA-White Farms – Larry Alber & Pat White, Charlotte, MI

Skye High X-Axis (D)

Black Watch Emo
 SPH Uberdude (D)
 SPH Sassy
 Black Watch Emo
 SPH Ursula
 SPH Sarah

LEA Cass

DH White Gold
 DH Montgomery (AI,D)
 Drover Hill's Lear-Ghatho
 GOF Ralph 21R (D)
 LEA Oneida
 Shat-Acres Arlie

Kassidy's sire has produced many show winners that have gone on to excel in the herd. Her maternal pedigree boasts hard working, "doing" cattle highlighted by great-grandfathers Canadian import GOF Ralph and American phenomenon DH White Gold. We took that impeccable background and bred her to Sunset Rebel Yell. Just last year, Rebel sired both Grand Champion Cow and Bull at the 2016 NWSS, and has proven himself to be a prepotent producer of show winners and quality working cattle. Here is an opportunity to purchase a top quality heifer bred to a living legend.



11 Spring Flight Iona

Red Cow calved 3/15/14 Reg. No. 53,456
 Tattoo: L: C10C
 Spring Flight Farm LLC – John & Jacquelyn Chotkowski, Elmira, NY

Spring Flight Archduke of Xanadu (D)

Knight Skye of Cherry Point
 Bert of Glen Haven (D)
 Silva's Ms. Bunny
 Homeboy of Five Star Farm (D)
 Spring Flight Xanadu (D)
 Ridge Top Tara

Skye High Templar

Homeboy of Five Star Farm (D)
 Knight of Five Star Farm (D)
 Valhallas Margot (AI)
 HI Depot Oscar 92
 Yarnelle Farms Miss Heather (D)
 JJ Miss Heather

Iona has a "who's who" of the cattle world in her pedigree. This two-year-old descends from Cherry Point, Silva, Five Star, Ridge Top, Yarnelle and Skye High to name a few. Also included are several Impact Dams and an Impact Sire. She is a moderate framed female, with length and correctness along with a sweet disposition to make her a complete package. AI bred and due in May to Angus Mor of Glengoyne, he is a Scottish bull just starting to make his appearance in the US.



12 Almosta Farm's Abbi

Black Cow calved 3/8/16 Reg. No. S13
 Tattoo: L: AL3E
 Almosta Farm – Steve & Sue Dyke, Magnet, NE

Finley Falls Boyd (D)

DH Montgomery (AI,D)
 LEA Becket (D)
 LEA In Vogue
 Trafalgar Nathan (D)
 HSC Stella's 1st Lady (ET,D)
 Summit Ranch Stella (ET,D)

AL WSS Annabelle

Crimsons Guns N Roses

Bell

Are you thinking about going outside the box and do some crossbreeding? Abbi is your girl! A producer gets the best of both breeds with this registered Sovereign combination. She is an offspring of WSS Annabelle, a Shorthorn Plus female and Finley Falls Boyd (D) a black registered Highland bull. Her birth weight was 63 lbs. and at 206 days her weaning weight stood at 540 lbs. She was on grass with her dam in our Nebraska pastures until a week before she was weaned.



13

Shat Acres Lawrence (D)

Red Bull calved 4/6/16 Reg. No. 55,899
 Tattoo: L: SAE9
 Shat Acres Highland Cattle, LLC
 Ray Shatney & Janet Steward, Greensboro Bend, VT

Shat Acres Cinnamon Bear (D)

Shat Acres Lauren

Dunvegan's Gille Nan Gleann (ET)
 Who's Hill Scorpio (D)
 Ridge Top Lady Cobb (D)
 Lance of Gordon's Fold
 Shat Acres Cinnamon Swirl
 Shat-Acres Cinnamon
 Lance of Gordon's Fold
 Shat Acres Lance's Lucky 08 (D)
 Shat-Acres Cinnamon
 Lance of Gordon's Fold
 Shat Acres Leanne 07
 Shat Acres Little Lassie

Lawrence is sired by Shat Acres Cinnamon Bear, sire to the 2016 NWSS top selling bull, Shat Acres Raisin Cain. Cinnamon Bear was 3X Grand Champion in 2009, and sire to many champions including four NWSS Grand Champions in the cow/calf class. Lawrence's granddam was Shat Acres Cinnamon Swirl, 2004 NWSS Grand Champion Female and full sister to Shat Acres Cinnamon Raisin, 3X NWSS Grand Champion Cow/Calf. Lawrence is long, muscular, easy moving and powerfully masculine. With the gentle temperament Shat Acres animals are known for, put Lawrence to work in your show or breeding arena.



14

CSF Humphrey (AI,D)

Dun Bull calved 1/31/16 Reg. No. 55,817
 Tattoo: L: MN1E
 Climbing Stump Farm – Mark, Randi & Joe Johnson, Harris, MN

LEA Denovan Adam (D)

We Tired Honey

DH White Gold
 DH Montgomery (AI,D)
 Drover Hill's Lear-Ghaoth
 Quiet Meadow Lightning
 Osceola Magnolia
 LEA Oleander
 VAS Weatherhill Noble 03
 Northern Oaks Fabian 607 (D)
 VAS Weatherhill Flame 96
 LEA Broderick (D)
 We Tired Dora
 We Tired Juliette

CSF Humphrey is a correct, deep bodied, well-mannered bull calf with a strong pedigree. On the dam side he is the first calf out of We Tired Honey, a daughter of We Tired Dora, a product of We Tired Acres, LEA-White, Summit Ranch and EZ Acres breeding. On the top side he is sired by LEA Denovan Adam, a dun bull from the influential DH White line through DH Montgomery. Humphrey's birth weight was 75 lbs. and his adjusted weaning weight, on milk, hay and pasture, was 518 lbs.



15

Dundonald's RAM (D)

Brindle Bull calved 1/3/16 Reg. No. 55,712
 Tattoo: L: DU2E
 Dundonald Farm – Eddie Mackay, Three Rivers, MI

Basswood4 of Dundonald (D)

RAM Shelby

Basswood of Swains GBB 1B (D)
 Basswood 2nd of Dundonald (AI,D)
 Juliette Dubh of Dundonald
 HI Oscar-03 (D)
 Ella Dubh of Dundonald
 Cinderella of Dundonald
 RAM Royal Cognac
 RAM Cavin (D)
 Hannegan Carol
 Flathead Glenlivet (D)
 RAM Angel
 Lady McLace (Lacy)

A dynamite bull with real genetic diversity. Dam Shelby, with unique Run a Muk breeding, was purchased at the 25th AHCA National Sale. Sire Basswood has traditional Scottish breeding back to Gille Buidhe of Benmore and was a 2015 ROE bull. He already has fine progeny that have dominated the 2016 show ring. Ultrasound at NWSS reinforced his strong genetic and heritable traits. RAM was the Champion Junior Bull Calf at St. Joseph County Fair and Reserve Champion Junior Bull at the Cornhusker State Highland Classic. He has an excellent disposition similar to his sire and great potential.



16 Trafalgar Dimitri 15 (ET,D)

Red Bull calved 7/6/15 Reg. No. 55,086
 Tattoo: L: T22D
 Trafalgar Square Farm – Ted Robbins, North Pomfret, VT

- CBS Yaz's Yukon Jack (D)**
 Sunset Rebel Yell (D)
 HSC Rebel's Jack (D)
 LEA Crackerjack (D)
 Ledyard's Talisker (D)
 Cobblestones Yazmine
 LEA Yarrow
- EZ Acres Pauline (D)**
 EZ Acres Nathaniel
 Trafalgar Luther (D)
 Trafalgar Fanny
 HS Sweet n' Sour
 EZ Acres Mircle
 EZ Acres Fritzie (ET,D)

Since 1989 Trafalgar has been bringing its best bulls to Denver and this one is no exception. Dimitri is a high quality bull, ready for the show ring or pasture. This stout made, structurally correct bull has already showed with consistency. He was Intermediate Yearling Bull Champion at the NEHCA Show and Reserve Intermediate Champion at the NY State Fair. His lineage is loaded with national champions on both sides. His sire is 2015 National Champion Bull, CBS Yaz's Yukon Jack and his dam is three-time ROE winner, EZ Acres Pauline. This bull's best is yet to come!



17 J Bar T's Iron Mike (D)

Black Bull calved 12/10/14 Reg. No. 54,479
 Tattoo: L: JBT9C
 J Bar T Highlands – John & Tina Keep, Bennett, CO

- HSC Steel Reserve (ET,D)**
 E Z Acres Nathaniel
 Trafalgar Nathan (D)
 Trafalgar Fanny
 Du Boise Lecoq (D)
 Summit Ranch Stella (ET,D)
 Diana of Kiyiwana (D)
- WPL Maureen**
 Landelley's DenJen (D)
 Landelley's White Lightening (D)
 Highplains Hillary
 Thistledown's Rannock
 Thistledown's Single Malt
 Lassy McDonald

J Bar T's Iron Mike is a solid, well-balanced, powerhouse black bull. He has generated an impressive show record; Reserve Grand Champion at the 2015 Boulder County Fair, Senior Bull Calf Champion at the 2016 NWSS, 2nd place AHCA Roll of Excellence Senior Bull Calf and Reserve Grand Champion at the 2016 Husker State Highland Classic. He is an early growth bull with impressive documented metrics. If you are looking for an easy keeping, high performance herd sire this should be your choice.



18 FPH Blackstone (D)

Black Bull calved 5/4/14 Reg. No. 54,346
 Tattoo: L: FPH06C
 Frank Silva and John & Dorothy Priske – LaSalle, CO

- CH Aloysius (D)**
 Zeus of Swain's TOG 13Z (D)
 DH Churchill (AI,D)
 Orfhlath 2nd of Dirtane
 Reno of Firetrail Farm
 Klair of Five Star Farm
 Valhalla's Randi
- Butternut Ridge Tansy**
 Out Back Dundee
 Hobbles Creek Dundee III
 BraeBurn's Piper II
 Davidson's Flath of MacDonald
 Butternut Ridge Marsha
 TY Lady Dorothea

Blackstone's sire is one of the best bulls ever used in our direct marketing beef business at Fountain Prairie Farms. We've processed over a thousand head of Highlands in our career and saw the results on the rail and plate every week. We now own him jointly with Silva's Highlands who sells under their Natural Homestead Beef label. Blackstone has champion and prominent Scottish blood and will increase the size and marbling of primal cuts. He is an easy fleshing, deep ribbed, thick made bull. Square, structurally correct and well-balanced. Great addition to any herd!



Summit Ranch Whitney, one dam of Lot 19.

19 20th Anniversary Special Choice of 2017 STR Calves

Star Lake Cattle Company – Daniel Thorne, Georges Mills, NH

To celebrate our 20th anniversary in the Highland cattle business we have decided to do the unthinkable! Star Lake Cattle Company is offering buyer's choice of our 2017 calf crop! This includes over 20 calves from our top mama cows including STR Enchanted, Yarnelle Farm's Betula, Star Lake Morgan, WF Caitlin, GH Ms. Lily, Star Lake Victoria and confirmed heifer pregnancies from Summit Ranch Whitney! Many of these are ET calves from a multitude of different sires.

Here's how it works – Buyer must choose their calf by August 15, 2017. Buyer is encouraged to visit Star Lake Cattle Company to make their selection however pictures will be provided upon request if the buyer is not able to facilitate an in person visit. Calf will be halter broke and is guaranteed to pass all health requirements of the NWSS sale. Buyer agrees to take possession of their calf on or before 280 days of age. Star Lake will work with the buyer to help arrange trucking. This purchase qualifies for the STR Buyer's Incentive Program. For further details visit us at starlake.com.



Sire of Lot 20

20 EZ Acres Kyle (D) X Dirigo Frederique (ET,D) Embryos

Highland Cattle Foundation – Brighton, CO

EZ Acres Kyle (D)

Alasdair Ruadh of Cladich
Alasdair Og 2nd of Dirtane
Mayfield Thistle's Lass
OxBow McClelland
WN Victoria McClelland III
WN Tasney Victoria II

Dirigo Frederique (ET,D)

Gille Ruadh of Glenforsa
Ben Eniglair of Scone Palace (D)
Ella Ruadh 6th of Scone Palace
Trafalgar Marke
Owl Rock Imber
Owl Rock Firefly

We've chosen this dynamite mating for you from our inventory and taken the guess work out of it! Kyle was bred by EZ Acres, a well-known operation since the 1960s and producer of many champions over 50+ years. Fascinating foundation genetics including Scone Palace and Cladich from Scotland and Stroh, Oxbow and Mayfield here in the United States. LC King's Pride, a powerhouse of his time, is a highlight of the pedigree. Frederique's bloodlines are packed with Scottish lineage and notable northeastern folds.

The HCF will pay for DNA parent verification prior to calf registration. Lot includes two grade #1 or #2 embryos to be sold as a package; fair market value is \$800. Purchase price in excess of FMV is tax deductible as permitted by law. Buyer pays shipping and must take possession within 60 days of the purchase. Transaction between buyer and seller only; AHCA Rules & Regulations apply. Eligible for USA only. All proceeds to benefit the Highland Cattle Foundation.



Sire of Lot 21

21 Thorbardin's Gandolf (D) X Pitcher Mtn Alice (D) Embryos

Highland Cattle Foundation – Brighton, CO

Thorbardin's Gandolf (D)

GOF Zaphod 1Z
GOF Chieftain 17C
GOF Rosered 20R
Craigievars Ruadh Gregory
Cape St. Mary's Melinda (D)
Cape St. Mary's Mariane

Pitcher Mtn Alice (D)

JU Luke
J U Smithers
JS Sapa Jermina
Pitcher Mtn. Fritz
Pitcher Mtn. Daisy
Pitcher Mt. Mary 2nd

A "cream of the crop" embryo package. Gandolf came from one of the largest beef producing outfits in the Highland industry. Thorbardin Ranch was very critical and selective with their bulls. This sire remained in their breeding program for several years with calf crops known for growth rate and functionality. The dam, Alice, originates from one of the oldest Highland herds in the country, Pitcher Mountain Farm of New Hampshire. Pitcher Mountain is home to growthy animals with great leg and hoof structure.

The HCF will pay for DNA parent verification prior to calf registration. Lot includes two grade #1 or #2 embryos to be sold as a package; fair market value is \$800. Purchase price in excess of FMV is tax deductible as permitted by law. Buyer pays shipping and must take possession within 60 days of the purchase. Transaction between buyer and seller only; AHCA Rules & Regulations apply. Eligible for USA only. All proceeds to benefit the Highland Cattle Foundation.



22

Gusgurlach of Windrush -6015- (D)

Red Bull calved 4/29/90 Reg. No. 34,685
Sunset Farm – Robert & Brenda Murray, Ashton, ON Canada

Iain Mor of Glenquoich

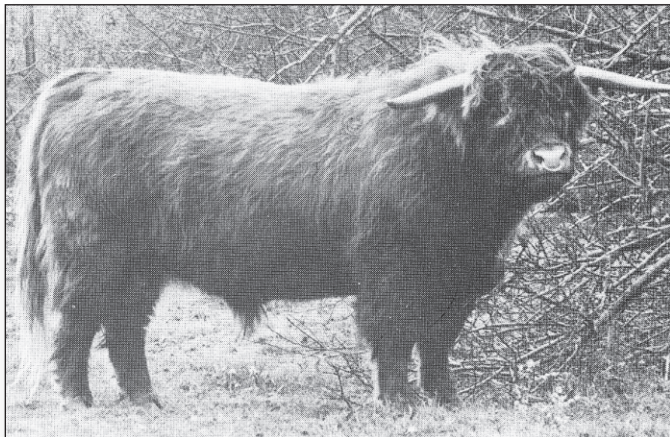
Mac Domhnall of Douneside
Storm of Glenquoich
Morag Lude 2nd of Glenquoich
Ossian 5th of Achnacloich
Monica 8th of Glenquoich
Monica 4th of Glenquoich

Shelterwood Sally Windrush

Donald Ruadh of Glenogle
Gille Buidhe of Benmore
Seud Buidhe 2nd of Benmore
Emerlen Gaylord
GOF Kirsch 2K
GOF Gwendolyn 1G

One of the most influential Highland bulls in North America. His sire Iain Mor of Glenquoich was imported into Canada from Scotland. Sunset Farm purchased 'Gus' in 1996. His progeny have dominated the show ring in North America from 1998-present day. His offspring all look alike, with great feet and legs, deep bodies and tons of breed character. Don't miss out on this opportunity as it may be the last chance to purchase semen from this outstanding bull. Very limited quantities of semen left in Canada (currently not available for sale).

Ten straws will be sold. Buyer pays shipping and must take possession within 60 days of purchase. Transaction between buyer and seller only; AHCA Rules & Regulations apply. Eligible for USA only.



23

Ben Eniglair of Scone Palace (D)

Red Bull calved 3/2/80 Reg. No. 15,745
Highland Cattle Foundation – Brighton, CO

Gille Ruadh of Glenforsa

Gille Coir 2nd of Scone Palace
Tearlach of Creagan
Maighdean Ruadh 7 of Barbreck
Rob Ruadh of Corryarrick
Mairi Ruadh 7th of Killundine
Mairi Ruadh 3rd of Killundine

Ella Ruadh 6th of Scone Palace

Fear Tagraidh Ile 2nd
Uallach 4th Ile
Capleadh 11th
Ben Alder of Scone Palace
Ella Ruadh 3rd of Scone Palace
Ella Dubh of Smaul

Rare 100% Scottish semen. There is not much left on the open private market. Excellent opportunity! Ben was a smooth, stout, heavy muscled bull. He was imported in the early 1980s by Dan Flynn of Dirtane Farm. Sire of the 2011 National Western Grand Champion Bull and grandsire to the 2013 Grand Champion Bull and Reserve Grand Champion Female.

Ten straws will be sold in two lots of five; fair market value and minimum bid is \$300/straw. Purchase price in excess of FMV is tax deductible as permitted by law. Buyer pays shipping and must take possession within 60 days of purchase. Transaction between buyer and seller only; AHCA Rules & Regulations apply. Eligible for USA only. All proceeds to benefit the Highland Cattle Foundation.

J BART
Highland Cattle Company

43578 E. Harvard Pl.
Bennett, Colorado
80102-8443
303-644-5089

jbt@highlanderheaven.com
www.highlanderheaven.com

JOHN & TINA KEEP
John Cell 720-505-0626
Tina Cell 303-877-0033

Almosta Farm

**REGISTERED
HIGHLAND CATTLE**

Steve & Sue Dyke
P.O. Box 27 • 101 West St.
Magnet, NE 68749 • 402.586.2631
sue@almostafarmhighlands.com
www.almostafarmhighlands.com

24

Genetic Stampede Semen Package

AHCA Website Committee – Brighton, CO

This vast array of genetics is being offered as a package to benefit AHCA website enhancements. Includes: Dirigo Forceful (ET) 29,105 (4 straws), Weathercock of Swains GBB 10W 24,802 (4 straws), Landelley's Zeus 45,426 (3 straws), Phillip 1st of Hi-Arrow -9609- 30,840 (5 straws). Popular prolific sires used in many leading herds. Top notch carcass quality, outcross pedigrees and reproductive efficiency are just a few of the highlights. The Website Committee would like to thank you, in advance, for your purchase and generosity. We appreciate your support and will utilize these funds with special care!

Sixteen straws will be sold. Buyer pays shipping and must take possession within 60 days of purchase. Transaction between buyer and seller only; AHCA Rules & Regulations apply. Eligible for USA only. All proceeds to benefit AHCA's website enhancements.



QUALITY HIGHLAND CATTLE
HEIFERS AVAILABLE FROM 2015
BEEF AVAILABLE
SEMEN AVAILABLE FROM TOP BULLS

- Jock of Dundonald #30584
- HI Oscar-03 #39887
- Zorrow 2nd of Dundonald #42328
- Basswood 2nd of Dundonald #49182
- Basswood4 of Dundonald #52760

Cobblestone Farm

Breeding Stock
Semen Sales

100% Client
Support

Registered Highland Cattle

Visitors Welcome!

Gordon and Carole Segal • East Troy, WI
Contact: Heather Bailey, Farm Manager • (262) 689-7013
tamarlinnorth@aol.com • www.cobblestonefarmhighlandcattle.com

AHCA
Historic City Hall
22 S. 4th Ave., Ste. 201
Brighton, CO 80601-2042
303.659.2399
info@highlandcattleusa.org
www.highlandcattleusa.org

NONPROFIT ORG
U.S. Postage
PAID
BERLIN, NH
PERMIT NO. 42

TERMS AND CONDITIONS

EXCEPT FOR THOSE STATED IN THE BELOW TERMS AND CONDITIONS, THERE ARE NO WARRANTIES, EITHER EXPRESSED OR IMPLIED, AS TO THE MERCHANTABILITY OR FITNESS FOR A PARTICULAR PURPOSE WITH RESPECT TO THE CATTLE BEING SOLD.

THE WARRANTIES AND GUARANTEES SET FORTH IN THE "TERMS AND CONDITIONS" ARE IN LIEU OF ALL OTHER WARRANTIES, EITHER EXPRESSED OR IMPLIED, AND REMEDIES PROVIDED THEREIN SHALL BE THE SOLE AND EXCLUSIVE REMEDY OF THE BUYER, OR ANY PARTY CLAIMING THROUGH THE BUYER, FOR ANY BREACH OF WARRANTY OR GUARANTEE THEREIN PROVIDED, AND ALL OTHER OBLIGATIONS OR LIABILITIES.

TERMS: Terms of the sale are cash or check payable immediately upon the conclusion of the sale and before the animals will be moved.

BIDDING: All animals sell to the highest bidder. Any disputes or challenges regarding bids will be settled by the auctioneer and his decision will be final.

PURCHASER'S RISK: Each animal becomes the risk of the purchaser as soon as sold; but it shall be the obligation of the seller to see that the animals are fed and cared for free of charge to the purchaser, until loaded for shipment or until the expiration of 48 hours after the sale, whichever occurs sooner.

REGISTRATION: A transferred certificate of registry will be furnished to the purchaser for each animal within 60 days following the sale.

HEALTH: All animals are eligible for interstate shipment; except as otherwise announced.

ANNOUNCEMENTS: Any changes of any kind in this catalog will be announced from the auction box and such announcements shall take precedence.

BREEDING GUARANTEE

1. All animals are guaranteed to be breeders, with the exception of: A) Calves under 12 months of age; B) Animals shown by purchaser after the sale (in cases of animals shown after purchase the breeding guarantees, if any, shall be such as agreed upon between the seller and the buyer); C) Injury or disease occurring after the sale; D) Gross negligence or willful misconduct on the part of the purchaser.
2. Bulls are guaranteed breeders if not allowed to run with the herd until at least 14 months of age. Any bull which settles cows by natural service and passes a breeding soundness exam according to the guidelines of the Society of Veterinary Theriogenologists, made by competent veterinarians, mutually agreed upon by buyer and seller, during any 6 month period of trial (provided for in paragraph 2 of "Options and Privileges of Return and Adjustment") shall be considered a breeder. Any guarantees with respect to the ability to freeze semen shall be by separate agreement between buyer and seller.
3. "Pregnant" females have been examined by a competent veterinarian and are so guaranteed.
4. "Served" females are not guaranteed to be in calf.
5. "Pasture exposed" females have been exposed but are not guaranteed to be in calf.
6. "Open" females have not been served and are so guaranteed.
7. Donor Females: A female which has been used in an embryo transfer program is not guaranteed to be a breeder after the date of sale unless by separate agreement between buyer and seller.
8. All animals sold as breeding animals are guaranteed not to be free-martins.

OPTIONS AND PRIVILEGES OF RETURN OR ADJUSTMENT

1. All claims for adjustment or refund must be made in writing either within 6 months of the sale date or no later than 6 months after the animal reaches 20 months of age, with the exception of claims involving misrepresentation of service sire.
2. In the event an animal is claimed to be a non-breeder, the animal may be returned to the farm of the seller, if in good condition and complying with the health requirement of the seller's state. The seller shall be entitled to 6 months trial following the return of the animal in which to prove that the animal is a breeder. If at the end of 6 months the seller is unable to prove the animal is a breeder, the seller shall, at the option of the buyer, replace the animal with another of equal value or refund the full purchase price. The return of full purchase price shall in any case be deemed full satisfaction and settlement. Any expense incurred for transporting an animal claimed to be a non-breeder shall be the responsibility of the purchaser, except the seller shall be responsible for transportation costs in excess of the distance between the purchaser's farm and the location where the sale took place. If the seller proves the animal to be a breeder, it shall be the obligation of the purchaser to take delivery of the animal and pay all expenses incurred.
3. If a female sold as "pregnant" proves not to be in calf, the purchaser may receive service from the bull previously used, if available, or if the bull is not available, the seller shall be obligated to make satisfactory adjustment on the purchase price to the buyer or, at the buyer's option, refund the full purchase price upon return of the animal to the farm of the seller. If a female is represented as "pregnant" at the time of sale to a certain bull proves to have been bred to a different bull, the seller shall be obligated to make a satisfactory adjustment to the purchase price or, at the buyer's option, refund the full purchase price upon the return of the animal to the farm of the seller. Any expense incurred for the transportation shall be the responsibility of the purchaser, except that the seller shall be responsible for transportation costs in excess of the distance between the purchaser's farm and the location where the sale took place.
4. If a female sold as "open" proves to be with calf, the purchaser may return the animal to the farm of the seller prior to calving for a refund of the full purchase price or for another animal of equal value, whichever is acceptable to the purchaser. It shall be the obligation of the seller to bear any expense incurred for transportation.
5. Cows with calves at side are presumed to be breeders with no further fertility guarantee.
6. Any controversy or claim arising out of or related to this contract, or the breach thereof, shall be settled by arbitration administered by the American Arbitration Association under its commercial arbitration rules, and judgment on the award rendered by the arbitrator(s) may be entered in any court having jurisdiction thereof.

AUTHENTICITY OF PEDIGREE

When an animal, through blood typing and/or DNA typing, is determined to have ancestry other than that reported on the registration certificate, the buyer shall be entitled to a refund of the full purchase price from the seller upon return of the animal to the farm of the seller at the buyer's expense. The animal in question, at the buyer's option, may be exchanged for another animal of equal value, or if agreeable with the buyer, the seller may have the certificate of registry corrected at the seller's expense with the corrected certificate returned to the buyer. Any adjustment provided herein, if selected, shall absolve the seller from further liability for authenticity of pedigree to the buyer.

THE SELLER SHALL NOT BE LIABLE UNDER ANY CIRCUMSTANCES FOR CONSEQUENTIAL OR INCIDENTAL DAMAGES. THE LIABILITY OF SELLER FOR A BREACH OF WARRANTY HEREUNDER IS LIMITED TO THE REMEDIES SET FORTH ABOVE.

The above terms and conditions of sale shall constitute a contract between the buyer and seller of each animal and shall be binding on both. Each sale or resale of an animal constitutes a separate transaction.

Neither the owners, sponsoring associations, auctioneers nor any other persons connected with the management or conduct of this sale assumes any liability, legal or otherwise.

ALL DISCLAIMERS OF WARRANTIES AND LIMITATIONS OF DAMAGES SET FORTH ABOVE ARE VOID WHERE PROHIBITED BY LAW.